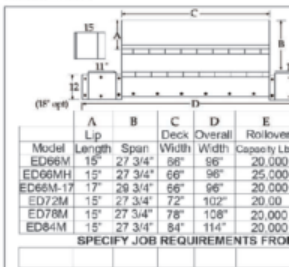
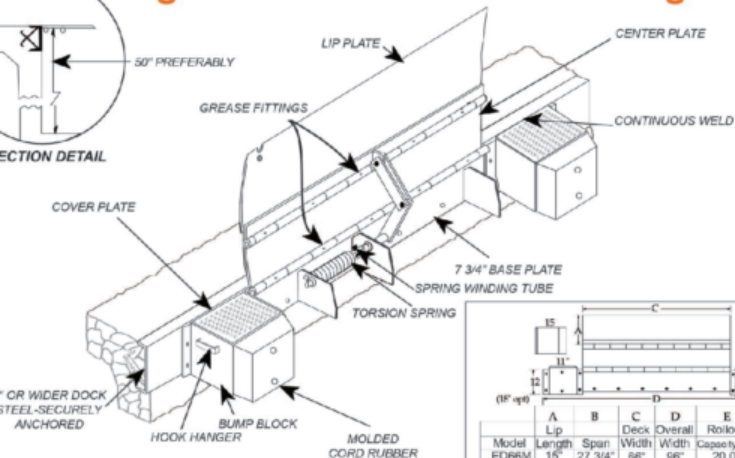
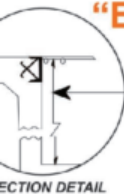


# "Edge of Dock" Submittal Drawing



**NOTES:** Deck & Lip - 55,000 lb. min. yield steel.  
**30,000 lb Capacity** in stored position. Units include C1045 cold rolled 1 1/16" rod and cold drawn seamless tubing (1-1/4" OD, 5/16" wall).



PO Box 338 • Spring Hill, Tennessee 37174  
 931.486.2296 • 800.251.3382 • Fax: 931.486.0316  
[www.pioneerleveler.com](http://www.pioneerleveler.com)

**JOB**